

**MOUNT VERNON** (MVN)(KMVN) 3 E UTC-6(-5DT) N38°19.40' W88°51.51'

480 B Class IV, ARFF Index A NOTAM FILE MVN

**RWY 05-23:** H6496X150 (ASPH-GRVD) S-80, D-108, 2S-95, 2D-190

PCN 33 F/C/X/U HIRL

**RWY 05:** VASI(V4L)—GA 3.0° TCH 32'. Thld dsplcd 774'. Road.

**RWY 23:** MALSR. Trees.

**RWY 15-33:** H3146X100 (ASPH-PFC) S-12 PCN 3 F/B/Y/U MIRL  
0.7% up NW

**RWY 15:** Tree.

**RWY 33:** Railroad.

**RUNWAY DECLARED DISTANCE INFORMATION**

**RWY 05:** TORA-6496 TODA-6496 ASDA-6496 LDA-5722

**RWY 15:** TORA-3146 TODA-3146 ASDA-3146 LDA-3146

**RWY 23:** TORA-5572 TODA-5572 ASDA-5572 LDA-5572

**RWY 33:** TORA-3146 TODA-3146 ASDA-3146 LDA-3146

**SERVICE:** S4 **FUEL** 100LL, JET A **OX2** **LGT** ACTIVATE MALSR Rwy 23  
—CTAF. ACTIVATE MIRL Rwy 15-33 and HIRL Rwy 05-23 —CTAF  
night only. Rwy 23 MALSR not avbl dalgst hrs.

**AIRPORT REMARKS:** Attended 1230-0200Z±. For svcs after hrs call  
618-315-5462. Migratory waterfowl and deer on and invof arpt. Rwy  
15-33 not avbl for air carrier ops with more than 30 passenger seats.  
Closed to scheduled air carrier ops with greater than 9 passenger seats  
and unscheduled air carrier ops greater than 30 passenger seats. 90-day PPR, call 618-242-7016. SW General Aviation  
apron clsd except by PPR from arpt manager ctc 618-242-7016. Rwy 05 also 18' railroad 238' from rwy end 498'  
right of centerline 2:1 slope. Heliport for private use by Air-Evac Lifeteam only.

**AIRPORT MANAGER:** 618-242-7016

**WEATHER DATA SOURCES:** AWOS-3PT 113.8 VNN (618) 242-7933.

**COMMUNICATIONS:** CTAF/UNICOM 123.0

**RCO** 122.05R 113.8T (ST LOUIS RADIO)

**KANSAS CITY CENTER APP/DEP CON** 127.7

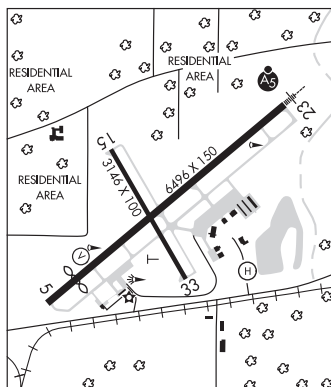
**AIRSPACE:** CLASS E

**RADIO AIDS TO NAVIGATION:** NOTAM FILE MVN.

(L) **VOR/DME** 113.8 VNN Chan 85 N38°21.72' W88°48.44' 224° 3.3 NM to fld. 558/2E. **AWOS-3PT**

**ILS** 111.7 I-MVN Rwy 23. Class IE. Unmonitored.

**HELIPAD H1:** H80X40 (CONC) PERIMETER LGTS



**ST LOUIS**

**H-5E, L-27C**

**IAP, AD**

## NEWARK

**CUSHING FLD LTD** (@C8) 2 SW UTC-6(-5DT) N41°31.17' W88°36.34'

**CHICAGO**

640 TPA-1440(800) NOTAM FILE IKK

**RWY 18-36:** 2831X180 (TURF) LIRL(NSTD)

**RWY 18:** Thld dsplcd 380'. P-line.

**RWY 36:** Thld dsplcd 250'. Fence.

**AIRPORT REMARKS:** Attended Nov-Apr irregularly. Ultralight activity on and invof arpt. Rwy 18-36 NSTD LIRL lghts ints varies;  
non FAA approved L-800 series. Rwy 18 P-line marked with orange balls. Rwy 18-36 dsplcd thlds marked with orange  
and white painted wood with one red lgt adjacent to each marker.

**AIRPORT MANAGER:** 630-325-2810

**COMMUNICATIONS:** CTAF/UNICOM 122.7

**COMM/NAV/WEATHER REMARKS:** For Clnc Del ctc Chicago Apm at 847-289-0926.

**NORTHBROOK** N42°13.28' W87°57.10' NOTAM FILE IKK.

**CHICAGO**

(H) **VOR/DME** 113.0 OBK Chan 77 163° 6.8 NM to Chicago Executive. 707/2W.

DME unusable:

215°-330° byd 35 NM blo 3,000'

**COPTER**

**H-5E, L-28H, A**

**OGLE CO** (See MOUNT MORRIS on page 73)